



**Mathematical, theoretical and experimental confirmations of IRS and IBS by R.M. Santilli**

Ritesh L. Kohale

Citation: [AIP Conference Proceedings](#) **1648**, 510025 (2015); doi: 10.1063/1.4912730

View online: <http://dx.doi.org/10.1063/1.4912730>

View Table of Contents: <http://scitation.aip.org/content/aip/proceeding/aipcp/1648?ver=pdfcov>

Published by the [AIP Publishing](#)

---

**Articles you may be interested in**

[New experimental support to Santilli's mechanism of IsoRedShift \(IRS\) in "heavy ions and dust free" medium](#)  
AIP Conf. Proc. **1648**, 510024 (2015); 10.1063/1.4912729

[Santilli's detection of antimatter galaxies: An introduction and experimental confirmation](#)  
AIP Conf. Proc. **1648**, 510005 (2015); 10.1063/1.4912710

[Introduction to Santilli iso-mathematics](#)  
AIP Conf. Proc. **1558**, 685 (2013); 10.1063/1.4825584

[Theoretical and experimental basis of Santilli's isoredshift \(IRS\)](#)  
AIP Conf. Proc. **1558**, 676 (2013); 10.1063/1.4825582

[Evidence in rare-earth \(R\)–transition metal \(M\) intermetallics for a systematic dependence of R-M exchange interactions on the nature of the R atom](#)  
J. Appl. Phys. **61**, 3971 (1987); 10.1063/1.338573

---

# Mathematical, Theoretical and Experimental Confirmations of IRS and IBS by R. M. Santilli

Ritesh L. Kohale

*Department of Physics, R. T. M. Nagpur University, Nagpur-440033, India*

*Email: [riteshkohale@gmail.com](mailto:riteshkohale@gmail.com)*

**Abstract.** The objective of present work is to put forward the Santilli's experimental, physical and mathematical conception of IsoRedShift (IRS), IsoBlueShift (IBS) and NoIsoShift (NIS). Santilli has carried out a step-by step isotopic lifting of the physical laws of special relativity resulting in a new theory today specifically known Santilli isorelativity. In his 1991 hypothesis Santilli established the requirement to realize the light as electromagnetic waves propagating within a universal substratum. Furthermore Santilli has carried out a step-by step isotopic lifting of the physical laws of special relativity resulting in a new theory today specifically known Santilli isorelativity.

**Keywords:** IsoRedshift, Santilli's Blueshift.

**PACS:** 92.60.Vb

## INTRODUCTION

According to Santilli's theoretical and experimental confirmations it has been observed that light propagating within a physical medium experiences a redshift without any relative motion between the source, the medium and the observer [1]. More willingly, Santilli has personalized the theory to experimental confirmation and presented a significant reconsideration of the special theory of relativity [2]. After the successful experimental measurements, Santilli released the results for publication [3] and has put accent on the main scope of the measurements which was initiated to confirm the existence of the IRS, without any possibility of conducting statistical averages. Prof. Santilli conducted his mathematical, theoretical and experimental studies for *interior dynamical problems* and confirmed that light propagating within the physical media admits *IsoRedShift (IRS)* and *IsoBlueShift (IBS)*. In general, electromagnetic waves and particles propagate exclusively within the anisotropic and inhomogeneous physical media. A prime variance between interior and exterior systems is presence in the form of contact, non-local, non-linear and non-potential interactions that cannot be steadily represented via a Hamiltonian or a Lagrangian formulation. Additionally, the literature surveys make known that Lorentz symmetry is not precisely applicable within a physical media and it prerequisites reliable simplification for exterior dynamical problems. The Minkowskian geometry and special relativity is valid only for exterior dynamical problems (e.g., electromagnetic waves propagating in vacuum and point particles). Nevertheless for the duration of past fifty years, research accompanied by large number of researchers, has acknowledged mathematical, theoretical, experimental, physical, chemical and industrial confirmation and accordingly we now recognize that the special relativity and Minkowskian geometry are not specifically applicable [4] for interior dynamical problems [5]. Through the 20<sup>th</sup> century propositions, these insufficiencies were apparently removed by the way of reduction of light to photons traveling in empty space and be subjected to scattering, absorption and reemission by the atoms of the medium. The present work is an attempt to present professor Santilli's view point on IsoRedshift (IRS) and IsoBlueshift (IBS) by considering his step by step mathematical and experimental justifications [6].

## BASIC THEORETICAL CONVENTIONS

The preceding predictable laws by E. Hubble [7], V. Sllipher [8] presented reveals that the cosmological redshift of galactic light is proportional to the distance of galaxies in "all" radial directions from Earth, and the redshift essentially occurs for "all" frequencies of galactic light. Instantaneously after above discovery, F. Zwisky [9] submitted the hypothesis according to which the cosmological redshift is due to light losing energy because of scattering with the intergalactic medium. It is known that the only quantitative representation of all experimental evidence for all frequencies is given by the Maxwell's concept of light. The transverse electromagnetic waves

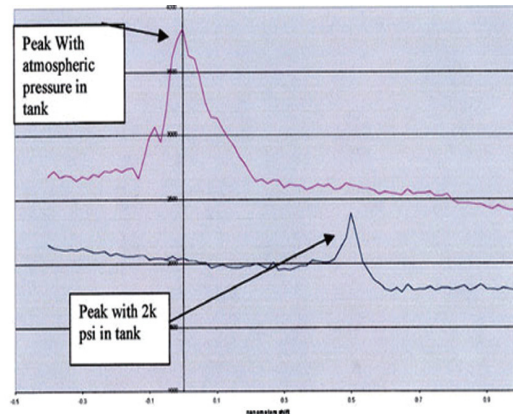
propagating in the universal substratum is given by historical expression for its speed within transparent physical media as,  $C = c / n(x, v, \omega, \delta, \dots)$ , where  $c$  is the velocity of light in vacuum and  $n$  is the index of refraction. This expression depends on all local variables, such as coordinates  $x$ , speed  $v$ , frequency  $\omega$ , density  $\delta$ , temperature  $T$ , etc. However Lorentz first attempted to establish the universal symmetry of local speeds  $C = c / n(x, v, \omega, \delta, T, \dots)$  and came across the major technical difficulties by considering the simpler case of constant speed  $c$  which sets aside the foundations of special relativity [10]. Afterward Prof. R. M. Santilli came to conclusion that the problem considered in Lorentz's theory is generally nonlinear, nonlocal-integral and non-Hamiltonian. Consequently, in 1996 Prof. R. M. Santilli had constructed a new mathematics applicable within physical media known as *Santilli isomathematics* which is specifically built for interior dynamical problems. This *isomathematics* is based on the locally varying speed of light  $C = c / n(x, v, \omega, \delta, T, \dots)$ , which is today known as the *Lorentz-Poincare-Santilli (LPS) isosymmetry* and the isotopeis of this special relativity known as *Santilli isorelativity* [11].

## SANTILLI'S EXPERIMENTAL CONFIRMATIONS OF ISOREDSHIFT

Almost after two consequent decades of refusals Santilli decided to conduct the needed experimental measurements since he had no other choice to demonstrate these fundamental implications. Consequently, with the assistance of the technicians at the Institute for Basic Research in Florida, as well as the support of external laser experts, Santilli constructed the IsoShift Testing Station consisting an initial air-conditioned cabin containing a blue laser; a second air-conditioned cabin containing wavelength analyzers; the laser and analyzer being interconnected by a 60 ft  $\approx$  18 m long steel pressure pipe containing air at the maximal pressures up to 2000 psi  $\approx$  137 bars. After several months of successful measurements, Santilli released the results for publication [12] and put the accent on the main scope of the measurements which was establish to confirm the existence of the IRS, without any possibility of conducting statistical averages with the available experimental set up



**FIGURE 1.** A view of the IsoShift Testing Station built by Santilli and his technicians in early 2009.



**FIGURE 2.** A view of the first measurement of a deviation from Doppler's law in our atmosphere in favor of the IsoRedShift achieved by Santilli in June 15, 2009 [13]

## MATHEMATICAL BACKGROUND.

Prof.R. M. Santilli had spent years of studies for the construction of an innovative mathematics appropriate inside physical media that was finally achieved in journal [14] of 1996, and is today known as isomathematics, where the prefix "iso" indicates the conservation of the original adages. He had dedicated his further years of research to the construction of the isotopies of Lie's theory, today it is known as the Lie-Santilli isotheory [14-15]. Merely following the entire studies, R.M. Santilli was in a position to construct the universal invariance of the locally varying speed of light  $C = c / n(x, v, \omega, \delta, \dots)$ , which is today known as the Lorentz-Poincare-Santilli (LPS) isosymmetry, besides the isotopeis of special relativity known as Santilli isorelativity [14-15].

In general these studies are currently raised to the invariance of the following most general possible symmetric line element in (3+1)-dimensions

$$x^2 = \frac{x_1^2}{n_1^2} + \frac{x_2^2}{n_2^2} + \frac{x_3^2}{n_3^2} - t^2 \frac{c^2}{n_4^2} \quad (1)$$

Where,  $n_\mu, \mu = 1, 2, 3, 4, n_4 = n$ , are experimentally measurable characteristics of the medium. In 1983 the universal symmetry of the overhead study was first conquered by R. M. Santilli and suggested that it can be written for the simpler case of motion in the (3,4)-plane as,

$$x'^1 = x^1, x'^2 = x^2, \quad (2)$$

$$x'^3 = \hat{\gamma}(x^3 - \hat{\beta} \frac{n_4}{n_3} x^4), \quad x'^4 = \hat{\gamma}(x^4 - \hat{\beta} \frac{n_3}{n_4} x^3), \quad (3)$$

$$\hat{\gamma} = \frac{1}{\sqrt{1 - \hat{\beta}^2}}, \quad \hat{\beta} = \beta \frac{n_4}{n_3} = \frac{v_3}{c} \frac{n_4}{n_3}. \quad (4)$$

The new isomathematics, physical formulations and correlated geometries for nonrelativistic and relativistic, classical and operator formulations for interior dynamical problems have currently experimental verifications in altogether quantitative sciences, including classical physics, particle physics, nuclear physics, super-conductivity, chemistry, biology, astrophysics and cosmology.

Remembering the Doppler law which is an ultimate manifestation of the Lorentz symmetry from which it can be uniquely derived, and predicts a null shift for null speed. But with the distinction, the covering isosymmetry exclusively characterizes a generalized law for the frequency of electromagnetic waves propagating within a physical medium, known as *Doppler-Santilli isoshift law*, which predicts the following frequency shift even for null speed.

$$\omega' = \frac{1 - \hat{\beta} \cos(\alpha)}{\sqrt{1 \pm \hat{\beta}^2}} \omega \approx (1 - \frac{v_3}{c} \frac{n_4}{n_3} + \dots) \omega = 1 \pm K(r, v, \omega, \delta, \dots), K > 0 \quad (5)$$

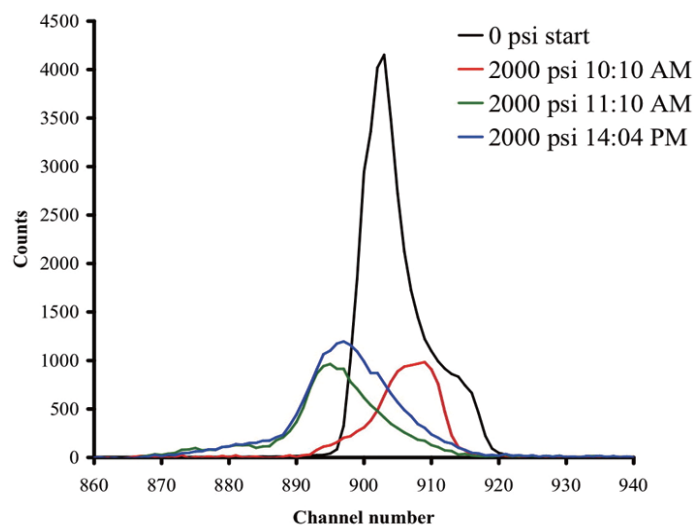
where: the sign “-” is used for media of low density (such as air or water) and characterizes the isoredshift referred to a shift toward the red for light propagating within transparent physical media without any relative motion between the source, the medium and the observer; while the sign “+” is used for hyperdense media (such as those in the interior of stars, quasars and black holes) and characterizes the isoblueshift referred this time to an increase of the frequency without relative motion.

Thus Santilli's classification of Isoshifts is as follows

*IsoRedShift (IRS)*, occurs for the minus sign in (5) when the medium is at a adequately low temperature when atoms are in their ground state, in such case light loses energy  $E = h\omega$  to the medium that produces significant anomalous redshift.

*IsoBlueShift (IBS)*, occurs for the plus sign in (5) when the medium is at adequately high temperature when most of its atoms are in excited states, in such case light acquires energy  $E = h\omega$  from the medium by means of significant anomalous blueshift.

*NoIsoShift (NIS)*, occurs when the energy lost by light to the medium is equal to the energy released by the medium to light with no anomalous shift in which case  $K = 0$  in (5).



**FIGURE 3.** The first spectrogram obtained on June 12, 2011, showing the existence of Santilli IBS. In this picture, the large central peak represents the wavelength of the blue laser light at atmospheric pressure; the peak to the right represents the IRS at pressure; and the peak to the left represents the IBS also at pressure

## CONCLUSIONS

Prof. R. M. Santilli conducted his mathematical, theoretical and experimental studies for *interior dynamical problems* and confirmed that light propagating within the physical media admits a *IsoRedShift (IRS)* and *IsoBlueShift (IBS)*, without any relative motion between the source, the medium and the observer. His discoveries regarding (*IRS*) and (*IBS*) deal with excitation and de-excitation of atomic electrons, and independent from known molecular processes, such as scattering or absorption. For the isoredshift, the interactions between light and the medium cause a lose energy  $E = h\omega$ , thus a decrease of the frequency  $\omega$ , due to the impossibility that atoms in the medium lose energy since they are generally in their stable ground state. For the isoblueshift, light acquires energy from the medium, thus existing the same isoblueshifted, that is, with frequency shifted toward the blue without any relative motion.

## ACKNOWLEDGMENTS

The author expresses his deepest gratitude to Prof. R. M. Santilli for providing an opportunity to get initiated in this field of research. Additionally, the author would like to thank Prof. A. A. Bhalekar for his guidance during the one day motivational workshop held at Smt. Bhagwati Chaturvedi College of Engineering, Nagpur-09 (INDIA) and for providing valuable suggestions during the preparation of this paper. The financial support from the R. M. Santilli Foundation is gratefully acknowledged.

## REFERENCES

1. R. M. Santilli, "Experimental Verifications of IsoRedShift with Possible Absence of Universe Expansion, Big Bang, Dark Matter, and Dark Energy," *The Open Astronomy Journal*, **3** (2010)124.  
<http://www.santilli-foundation.org/docs/Santilli-isoredshift.pdf>
2. R. M. Santilli, "Experimental Verification of IsoRedShift and its Cosmological Implications," *AIP Proceedings*, **1281**, (2010)882.  
<http://www.santilli-foundation.org/docs/Isoredshift-Letter.pdf>
3. R. M. Santilli, G. West and G. Amato. "Experimental Confirmation of the IsoRedShift at Sun at Sunset and Sunrise with Consequential Absence of Universe Expansion and Related Conjectures," *Journal of Computational Methods in Sciences and Engineering*, **12** (2012)165.  
<http://www.santilli-foundation.org/docs/Confirmation-sun-IRS.pdf>
4. R. M. Santilli, *Isotopic Generalization of Galileo and Einstein Relativities*. Vol. I and II, Hadronic Press, Palm Harbor, FL, USA, 1991.  
<http://www.santilli-foundation.org/docs/Santilli-01.pdf> <http://www.santilli-foundation.org/docs/Santilli-35.pdf>

5. I. Gandzha and J. Kadeisvily, "New Sciences for a New Era", Sankata Printing Press, Kathmandu, Nepal, 2011.  
<http://www.santilli-foundation.org/docs/RMS.pdf>
6. R. M. Santilli. *Hadronic J.*, **1**(1978) 223.  
<http://www.santilli-foundation.org/docs/Santilli-58.pdf>
7. E. Hubble, *Proceedings of the National Academy of Sciences of the United States of America*, vol. 15, pp.168-173,1929.
8. V. Slipher, *Popular Astronomy*, **23** (1915) 21 .
9. F. Zwicky, *Proceedings of the National Academy of Sciences of the United States of America*, **15**(1929) 773.
10. R. M. Santilli. *Hadronic J.*, **1**(1978)223.  
<http://www.santilli-foundation.org/docs/Santilli-58.pdf>
11. R. M. Santilli, G. West and G. Amato. "Experimental Confirmation of the IsoRedShift at Sun at Sunset and Sunrise with Consequential Absence of Universe Expansion and Related Conjectures," *Journal of Computational Methods in Sciences and Engineering*, **12**(2012)141.  
<http://www.santilli-foundation.org/docs/Confirmation-sun-IRS.pdf>
12. H. Ahmar, G. Amato, J. V. Kadeisvili, J. Manuel, G. West, and O. Zogorodnia, "Additional experimental confirmations of Santilli's IsoRedShift and the consequential expected absence of universe expansion," *Journal of Computational Methods in Sciences and Engineering*, **13**(2013)321.  
<http://www.santilli-foundation.org/docs/Confirmation-sun-IRS.pdf>
13. R.M. Santilli, Experimental Verifications of IsoRedShift with Possible Absence of Universe Expansion, Big Bang, Dark Matter, and Dark Energy, *The Open Astronomy Journal* ,**3** (2010) 1.  
<http://www.santilli-foundation.org/docs/Santilli-isoredshift.pdf>
14. R. M. Santilli. "Nonlocal-integral isotopies of differential calculus, algebras and geometries," *RendicontiCircolo Matematico Palermo, Suppl.* **42**(1996)7  
<http://www.santilli-foundation.org/docs/Santilli-37.pdf>
15. R. Anderson, M. Cloonan and D. Gandzha, *New Sciences for a New Era*, Mathematical, Physical and Chemical Discoveries of Ruggero Maria Santilli,  
<http://www.santilli-foundation.org/santilli-scientific-discoveries.html>